



A Complete Ecosystem for IP-based Physical Security Solutions



IPTECHVIEW is a complete ecosystem for installers. It offers partners and customers everything they need for **video surveillance, video intercom, access control** and more. With the flexibility to sell one solution today, and expand projects in the future.

The platform's modular and scalable design makes it easy to deliver the perfect solution for any customer, and its remote service capabilities ensure the option to provide remote support for the life of the project.

Sell solutions and create long-term partnerships with your customers.



IPTECHVIEW SURVEILLANCE - User-friendly Cloud VMS

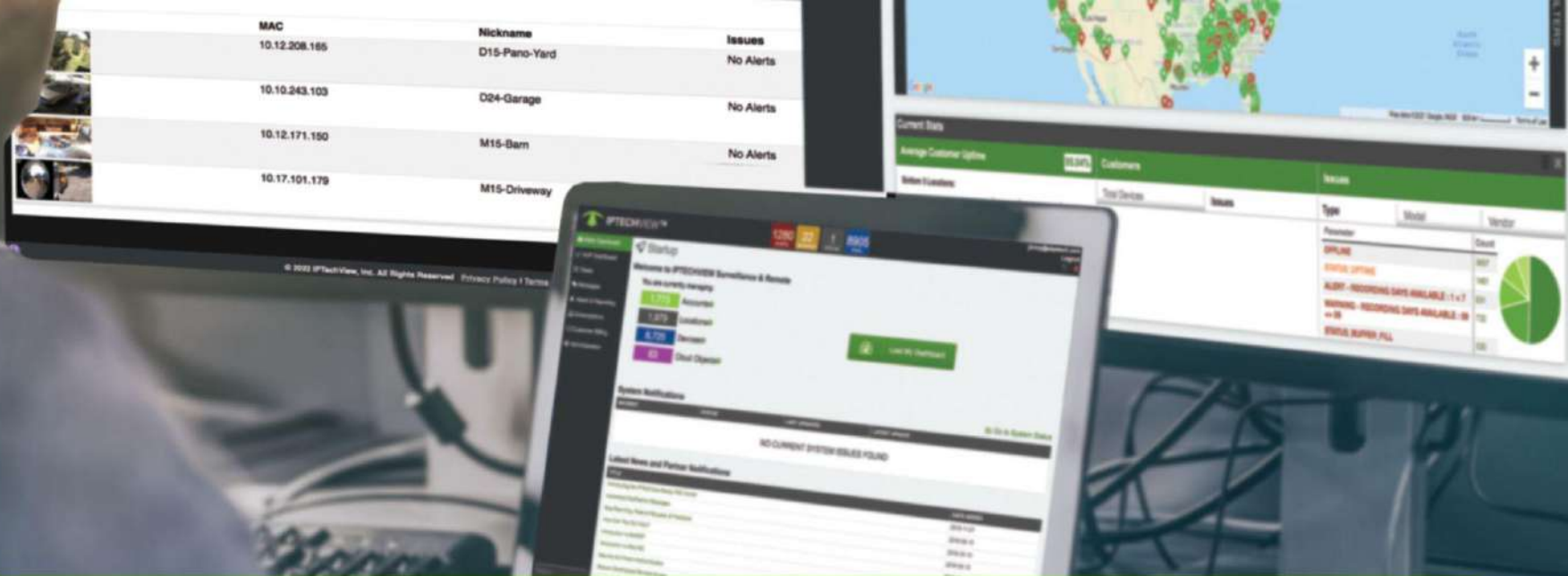
Serverless, Highly Scalable, Expandable with In-Camera & Cloud Based AI.



IPTECHVIEW is also a **universal remote management** Platform and provides **system health monitoring** tool for Technology Partners.

It was designed so partners can provide remote support to the IP Technology solutions and eliminate most truck rolls. This helps partners scale their business to a wider geography, do more with the same people count.

It also gets customers faster service and de-risks providing recurring remote support plans which provides partners a basis to develop a recurring revenue model based on their own services.



IPTECHVIEW SYSTEM

A Cloud Platform to Manage & Service IP Technology Solutions & Intelligent End-Points



UNIVERSAL Cameras

IPTECHVIEW started by revolutionizing remote management and providing a more user-friendly cloud VMS.

With the UNIVERSAL cameras we took it to the next level. Every camera ships ready to Plug & View™ and preconfigured to your cloud account, ready to be remotely managed.

We reimagined installation of cameras with auto-pre-configuration to reduce time and cost for professional security cameras projects.



UNIVERSAL Cameras



A Complete Camera Line that is All Inclusive,
Cloud-Direct, Affordable and is Plug & View™ Ready

Designed for the Cloud by IPTECHVIEW



Mix and match with supported cameras brands to
create the best solution for your customers



Local video streaming and local redundancy for our cloud solution.

"The cloud is very promising, but if I can't see all my cameras at full speed in-house without using up too much bandwidth it will not work for me."

"I can't be blind if there is an Internet outage."

The IPTECHVIEW CAMViewer is a game changer and provides viewing at up to 30 FPS of cameras locally in different areas of our office - all with cloud management.



Remotely cloud-configure one or multiple viewers, super high-resolution & framerate for local viewing. Local Video Decoding works even without Internet so you're never in the dark.



With remote management we want to help reduce truck rolls for the lifetime of the system. That requires control over power & network.

"The IPTECHVIEW system provides secure **cloud-managed routers** and **PoE switches & routers** to really make remote management a reality. Now remote power cycling and VLAN changes have become a no brainer."

Shipped IPTECHVIEW-Ready, plug-in and manage remotely.



- Cloud-managed
- Reliable PoE
- IP camera integration
- Plug & Play



- Ruggedized industrial switch
- Remotely power cycle individual ports
- See device type / MAC by port



Need Cameras but no Internet?

The demand for Wireless IP Cameras is growing fast.

IPTECHVIEW created the perfect LTE Modem for IP cameras that includes 4 port POE+ and cloud management of the modem and the power ports through the platform.

With IPTECHVIEW's MobileBASE you can take "rapid deployment" of security cameras to a whole new level.



Wireless standard MobileBASE, your extendable modular rapid deployment base unit or simply get the MobileBASE-2CAM - ready to use with 2 Active Deterrent 90° cameras



IPT LTE-Gate-POE

The secret sauce of IPTECHVIEW's MobileBASE is the IPT LTE-Gate-POE.

Cloud-managed on IPTECHVIEW. It does not need Static IP. It Includes **2 SIM LTE** for failover, **120W of PoE** for up to 4 cameras, the ability to **remotely power cycle each port** and a **WiFi access point** so you can have some devices bridge in via WiFi.

Think about minimum points of failure and fast servicing of your remote projects.



An LTE router made for IP camera projects. Includes PoE and WiFi AP



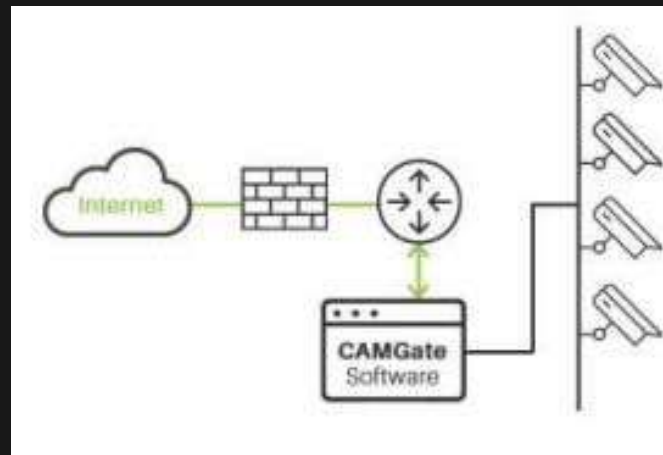
How to manage Devices that are not IPTECHVIEW Ready?

IPTECHVIEW created several solutions to empower partners to **access, manage and monitor** the health of almost anything and in some cases to ensure the cyber security of these devices by not letting them be accessed directly and eliminating the need for port forwarding.



- Phones
- Cameras
- Printers
- PCs
- Network Equipment

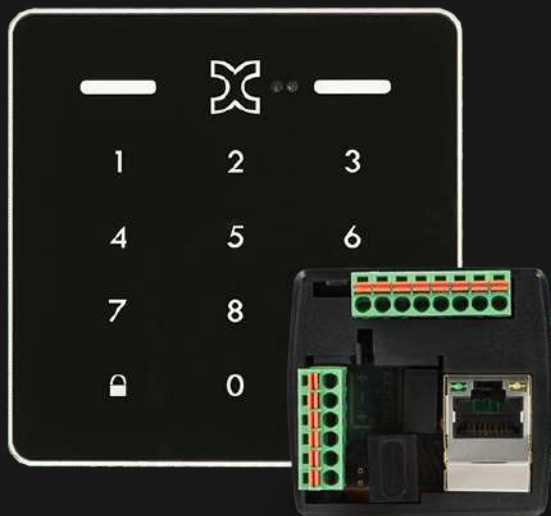
With the IPT-Sec-Gate securely and remotely manage and monitor anything that has a web interface.



Integrate existing non cloud-direct cameras to IPTECHVIEW **cyber-secure** legacy cameras behind a two-way network protection.



Video Intercom pre-configured to work with full remote cloud management & cCloud PBX option - single button, multi-tenant or face recognition. Fast and easy deployment.



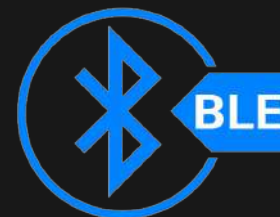
Keypad and cloud controller for new or existing strikes and mag-locks



Latch Lock



Mortise Lock

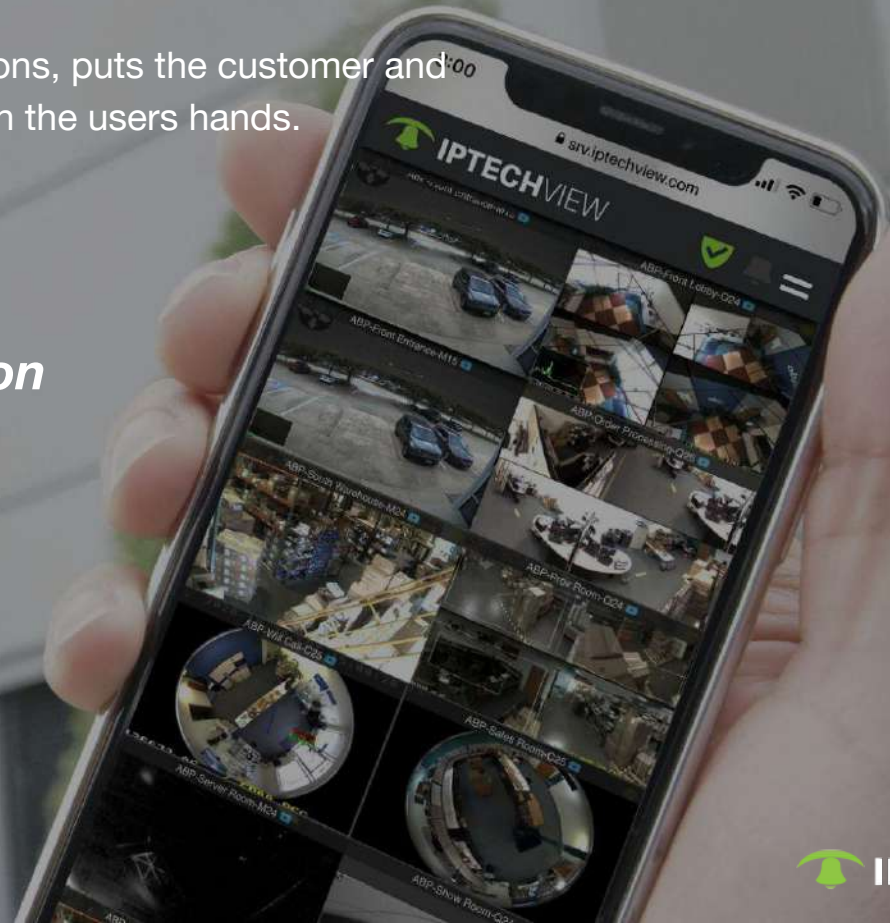


Add access control to retrofit normal doors **without any wires or power.**

IPTECHVIEW Solutions

Solves the many problems of legacy installations, puts the customer and ease of use in the center and puts solution in the users hands.

- **SIMPLIFIED & INCLUSIVE**
- **SERVERLESS**
- *Future Proof / Multi-Solution*
- **No Single Vendor-lock-in**
- **Scalable & Secure**
- **Enterprise Ready**





A platform designed & engineered for technology partners like you.

Our goal was to provide you with an easier and more universal solution for your customers.

Help you scale your profits by lowering your cost & speeding up your installations so you can grow with your existing team. Also grow your recurring revenue stream by providing your own recurring service plans based on modern remote service without truck-rolls whenever possible.

Provide you with an ever growing platform and ecosystem to empower you to become your customers long-term technology partner.



More Information

info@iptechview.com

